

QUALITY IS OUR RECIPE

CONCRETE PIPE INGREDIENTS

AGGREGATE

Aggregates make the concrete mix more compact, decrease the consumption of cement and water, and contribute to the strength of the concrete.

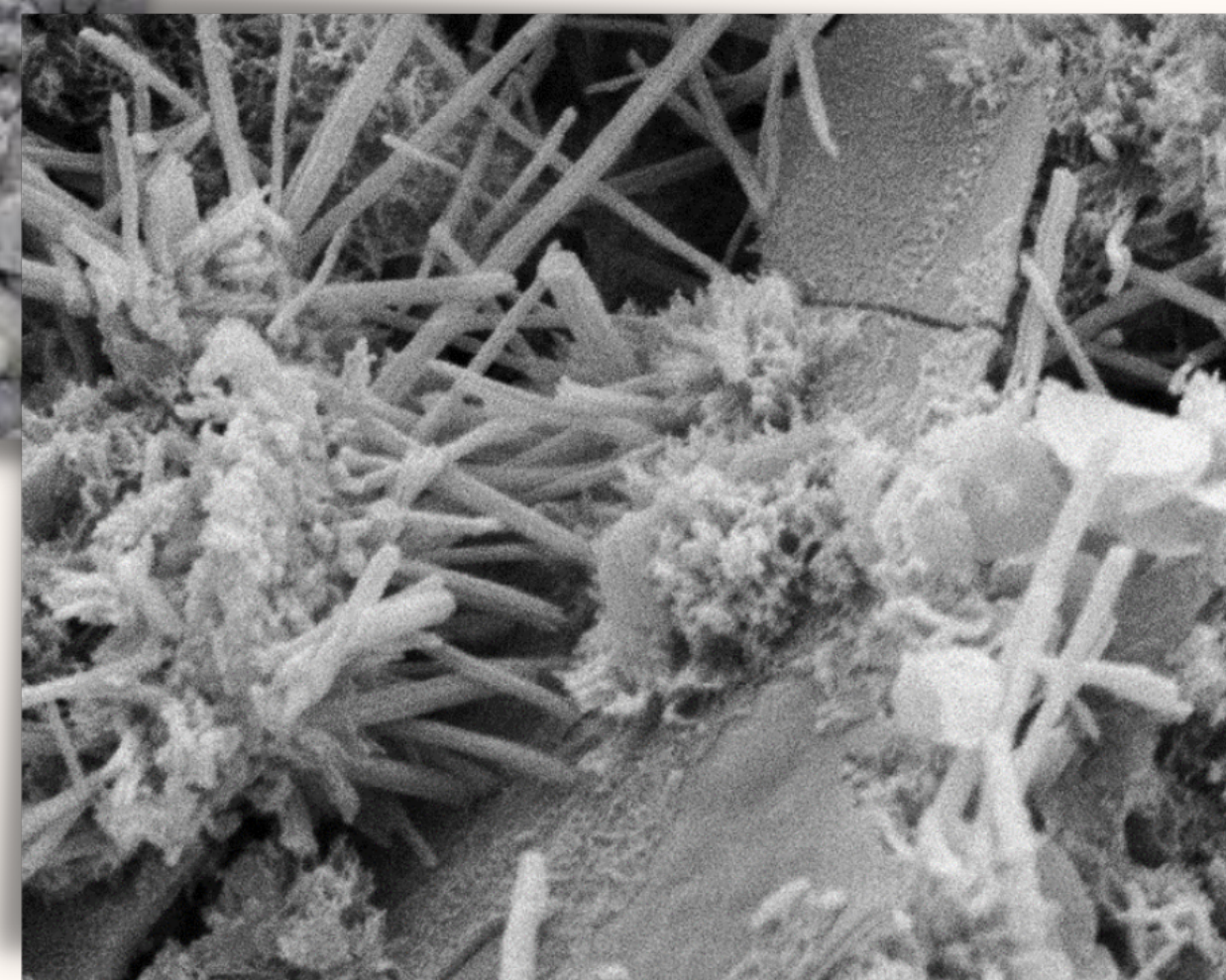
PORTLAND CEMENT

Portland Cement is the key ingredient that when mixed with water, the resulting paste “glues” the aggregate particles together to form concrete.

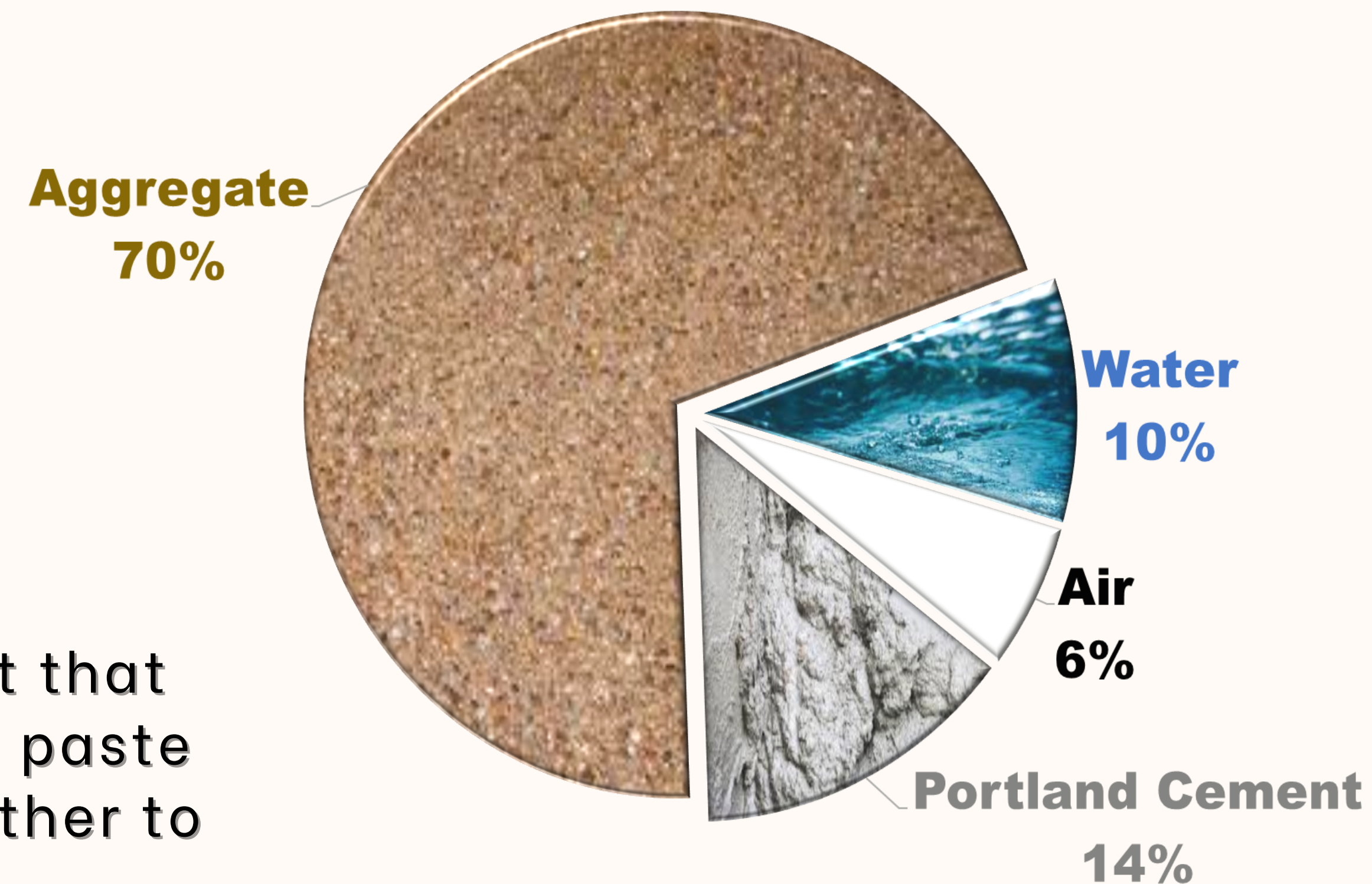
Calcium oxide	64%	CaO	"Lime"	C
Silicon oxide	22%	SiO ₂	"Silica"	S
Aluminium oxide	6%	Al ₂ O ₃	"Alumina"	A
Iron oxide	3%	Fe ₂ O ₃	"Iron"	F



Clinker



Hydrated Cement Paste

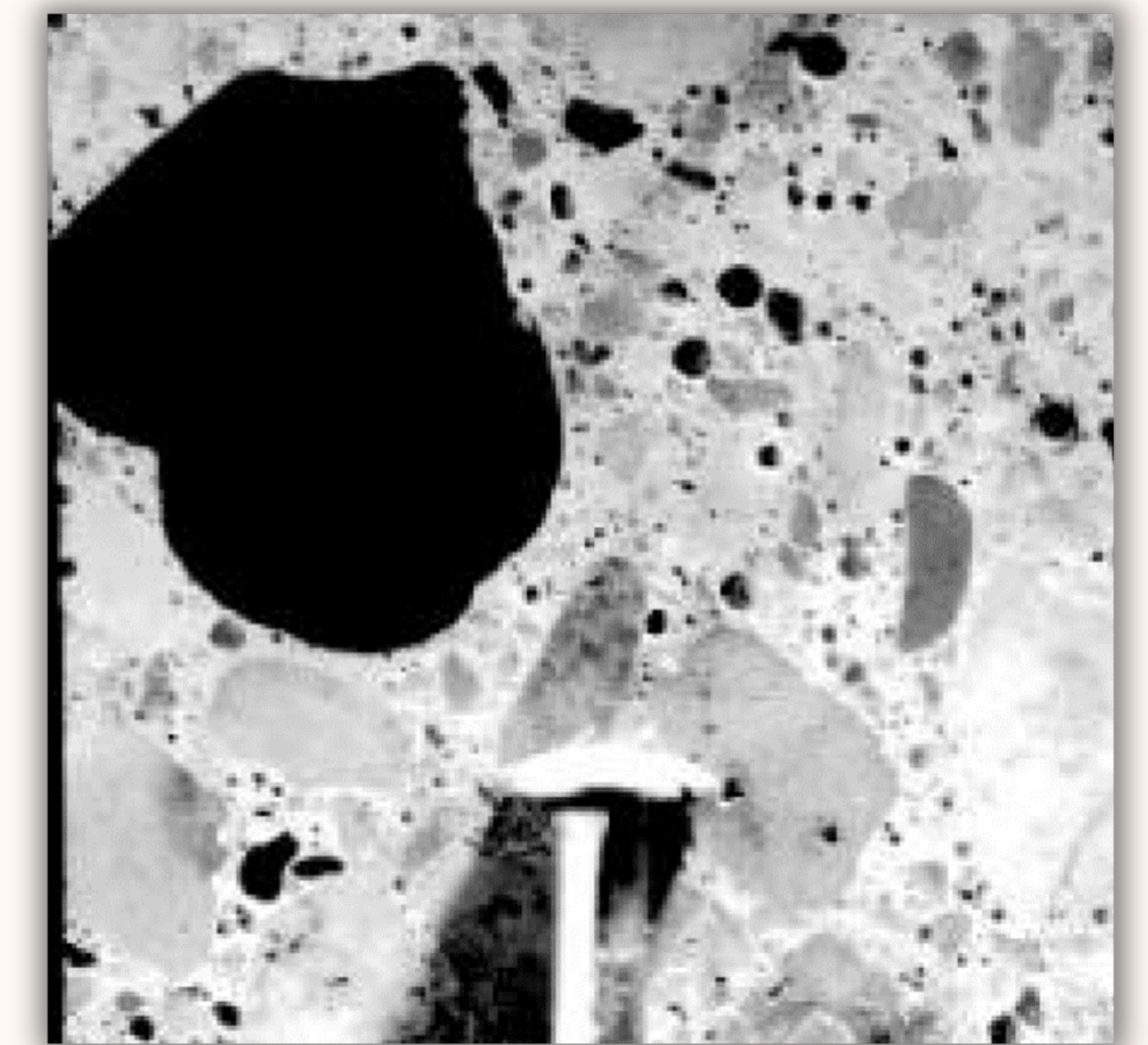


WATER

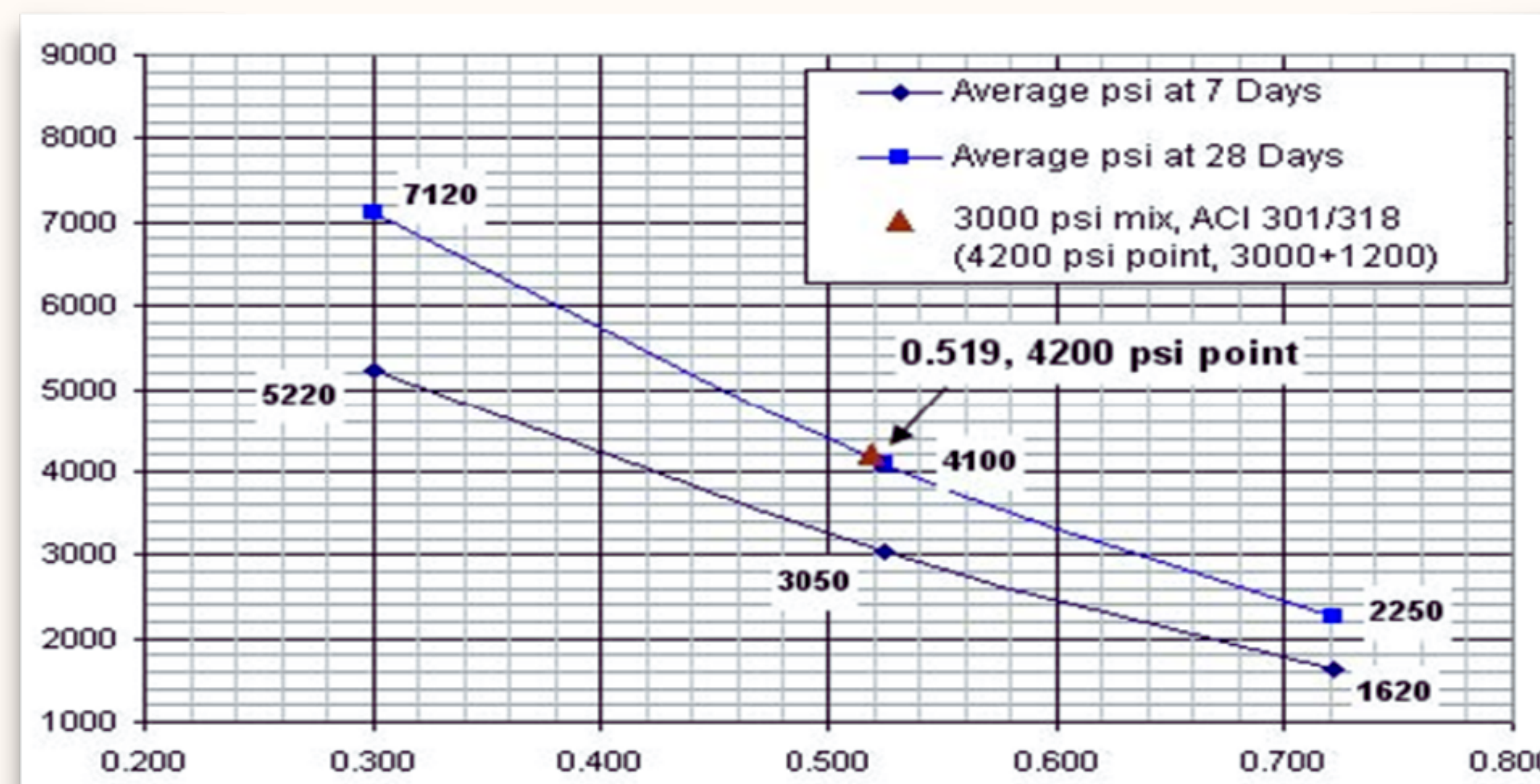
Water controls many fresh and hardened properties in concrete including workability, compressive strengths, permeability, and durability.

Air

Air entrainment ensures that excess water has a chance to expand when it moves through the freeze-thaw cycle.



The strength & durability of concrete is greatly influenced by the w/c ratio!



Admixture

Admixtures, when used properly, modify, enhance, and improve many of the properties of concrete.