

# POST INSTALLATION INSPECTION DEMONSTRATION

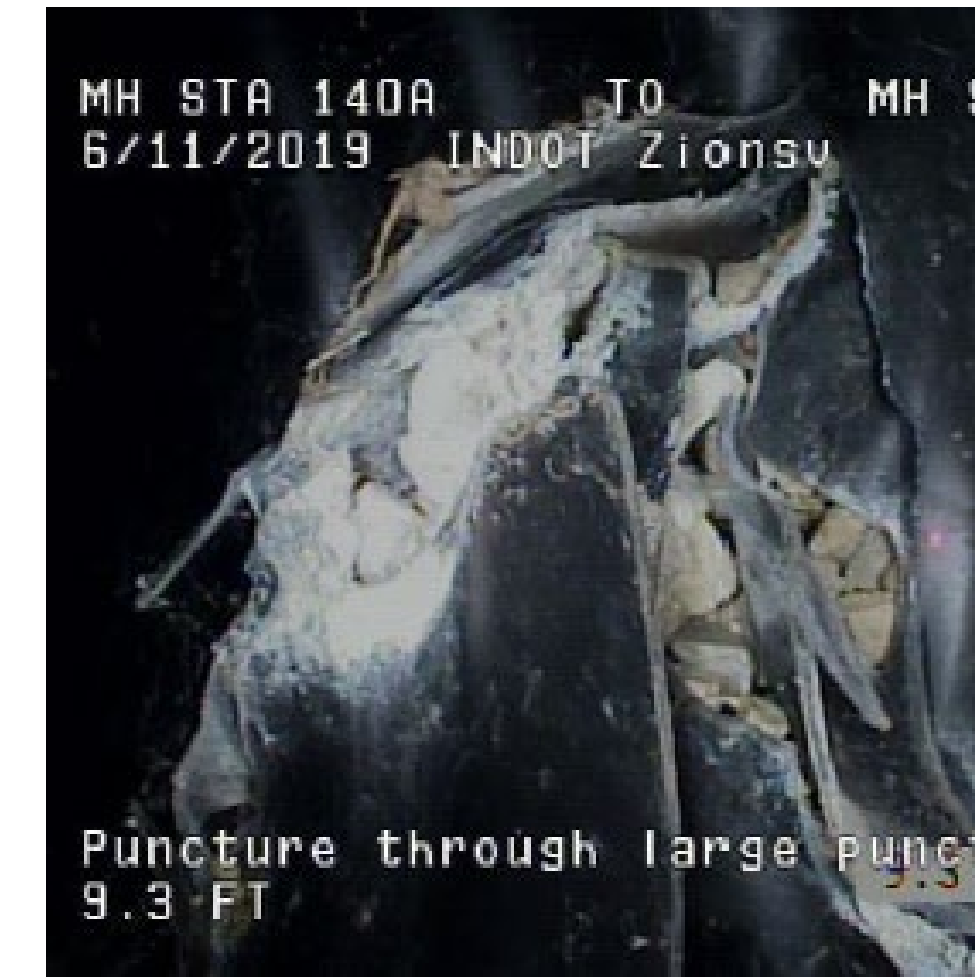
## BONDING & RAPPORT



## SAFETY



## RESULTS



## LEARNINGS



Eliminate hazards and control risks by implementing safety precautions in confined spaces with:

- Entry Procedures
- Protective Equipment
- Rescue Plan
- Risk Assessments

