

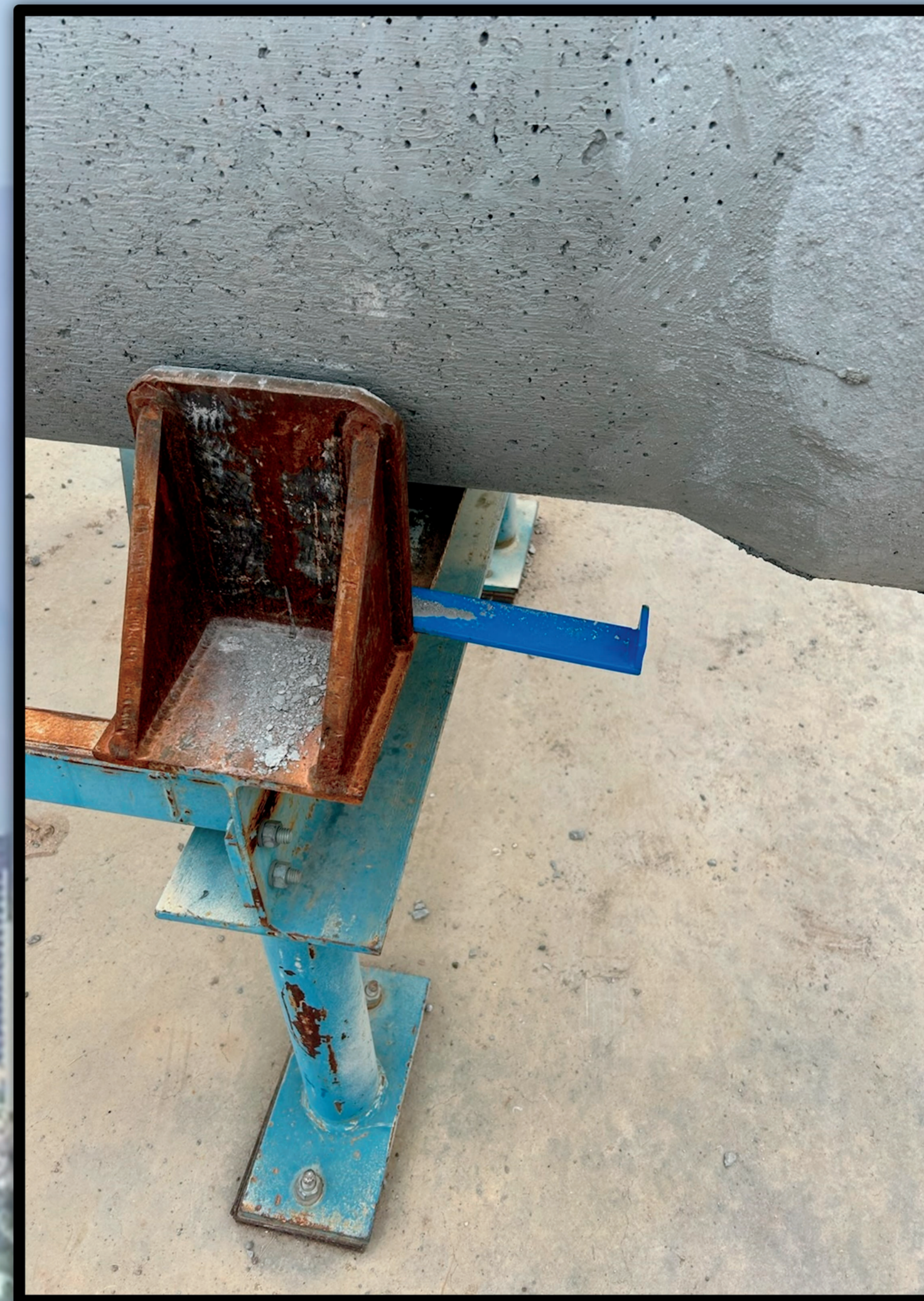
D-Load Bar

Phoenix, Arizona

Problem: Setting a big bell pipe for D-Load testing can take too long.

The bell/wall transition must be in a precise location to test properly.

Multiple pipe adjustments needlessly increase both the time to set up the test, and the time workers are in close proximity to heavy products and machines.



The D-Load Bar provides a simple but effective solution. Giving the loader a visual target for exact setting of the pipe, the first time.



Increased Safety and Efficiency working together for Increased Quality!