



CAUTION

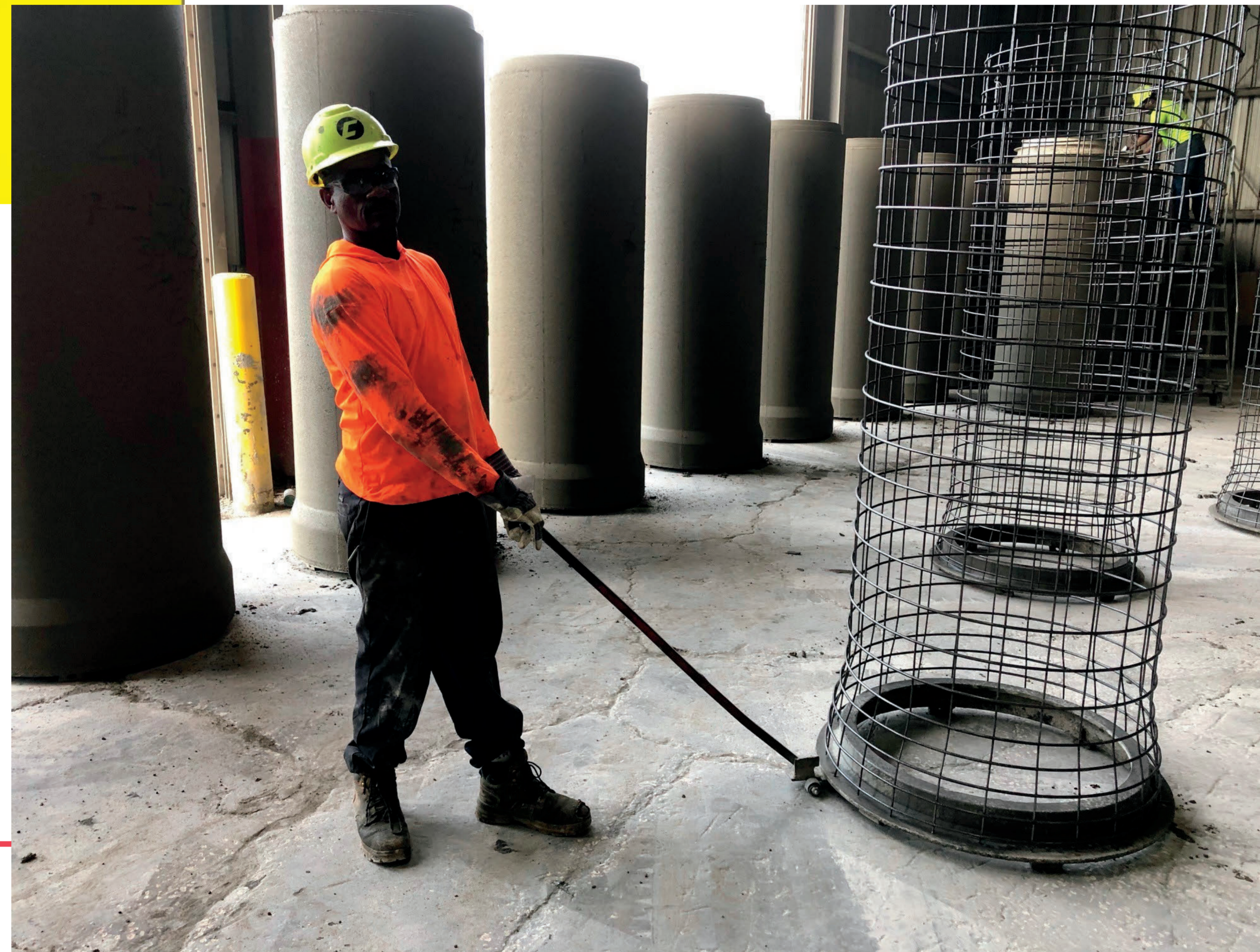


Slips, Trips & Falls are the leading cause of workplace injuries and hold second place for accidental deaths in the United States!

For years in our industry moving a pallet during setup or staging either included picking up and rolling a 180lb-300lb steel ring or using a makeshift "hook" to drag them into place. Both methods introduce additional hazards to the workplace and the process. Many injuries have been sustained due to the pallets falling onto team members, the pallet pinching body parts, and even crushing limbs due to their weight. Having to learn the skill of balancing and rolling that much weight is difficult. Additionally, makeshift "hooks" often break causing team members to fly backwards, lose their balance and either fall onto the ground, or other pallets. This has resulted in at least one broken arm, a good number of head injuries, and countless falls.



COUNTY[®] MATERIALS CORPORATION



The RCP Pallet Mover uses the age old "leverage is power" equation, coupled with castors to create a rolling lever dolly. The force used to push down on the handle is quadrupled and lifting a heavy pallet/cage assembly is incredibly easy. Once the pallet is off the ground, the casters eliminate the resistance of dragging steel across concrete, and instead will simply roll to the desired location.



RCP Rolling Pallet Mover

Rolling into a production facility near you!

