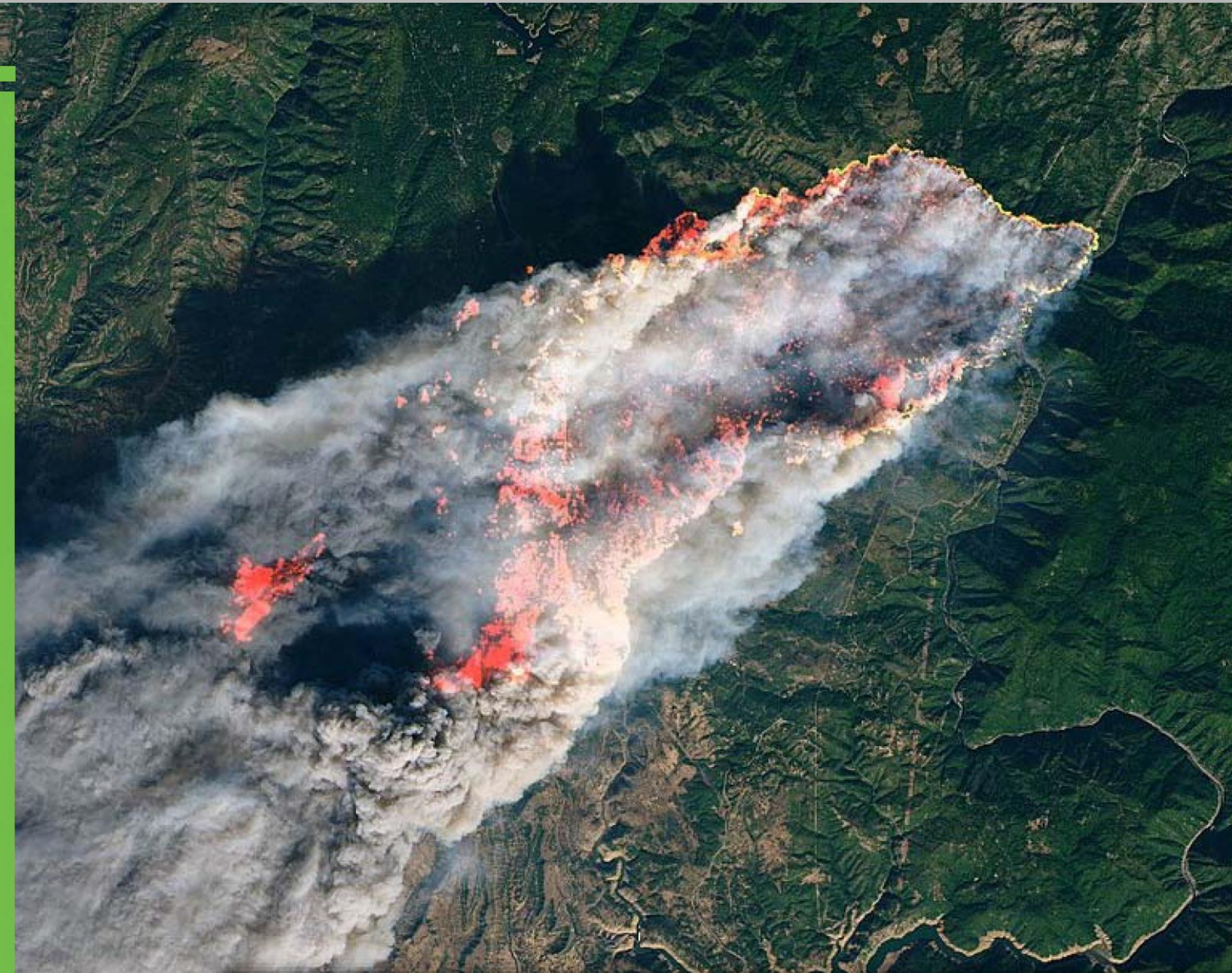


Fire Resilient Infrastructure

2018 CAMP FIRE

- Most destructive wildfire in California history
- Globe's most expensive disaster of 2018
- At least 85 fatalities
- 153,336 acres burned and 18,000 structures destroyed, most of which occurring in the first 12 hours
- Paradise lost 90-95% of all structures
- 2018 population reduced from 27,000 to about 4,000 overnight



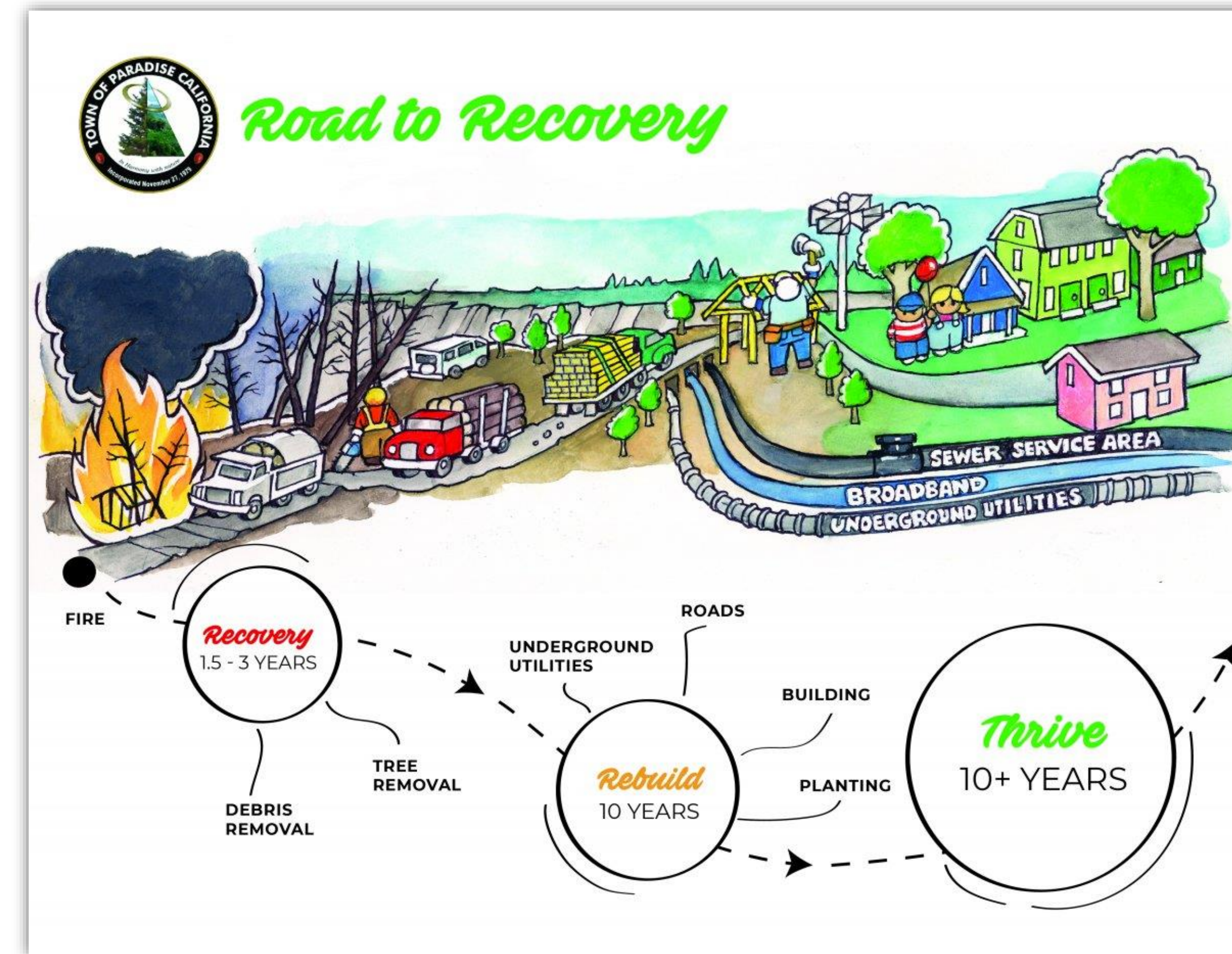
MELTED CULVERTS



Town of Paradise
November 24, 2018

SAFETY ALERT: The Town of Paradise has discovered a creek culvert was compromised due to fire damage on Wagstaff Road at Clark Road. Please be advised that in addition to the closure of Wagstaff Road, crews are working to assess and identify additional culverts and roads within Town limits that may be compromised.

ADVISORY



Project Description

- On-System:** ...remove and replace Camp Fire damaged HDPE culverts and restore roadway sections above the pipe at (35) locations townwide.
- Off-System:** ...remove and replace Camp Fire damaged HDPE culverts and restore roadway sections above the pipe at (26) locations townwide.



ON-SYSTEM CULVERT REPLACEMENT

Vision: Safer
Project Number: 7301

CONTACT

Marc Mattox
Public Works Director/Town Engineer
mmmattox@townofparadise.com
530.872.6291 x105

Jessica Erdahl
Capital Projects Manager
jerdahl@townofparadise.com
530.872.6291 x103

WEBSITE:
www.townofparadise.com
www.makeitparadise.org

Watch Fire Resilient Webinar

www.concretepipe.org/fire-webinar

Key Result

Repair damaged culverts with fire resistant pipe materials along evacuation routes to improve safety and provide safe and effective management of storm runoff.

